



# COMPASS MARITIME WEEKLY REPORT



50 TICE BOULEVARD, SUITE 195, WOODCLIFF LAKE, NJ 07677 (201) 907-0009

January 13<sup>th</sup> 2025 / Week 2

## THE VIEW FROM THE BRIDGE

The secondhand Container vessel S&P market has been consistently active, especially at the end of 2024, and a large number of vessels of all sizes and ages have been reported sold recently.

Not only has MSC been very active on the secondhand front where they have recently purchased vintage units M/V "TASMAN" (5,936 TEU's), M/V "BIG LILLY" (1,730 TEU's), M/V "ONE HONG KONG" (8,212 TEU's) and the M/V "ATOUT" (1,702 TEU's) listed below and MSC also has reportedly ordered 10 x 24,000 TEU's newbuilding vessels at Hengli Heavy Industries in China for region \$230 mill. each basis delivery before 2029!

Recent sales:

=====

mv "ONE HONG KONG" (98,849 DWT/Built 2009 in Japan - 8,212 TEU's) \$52.2 mill. to MSC  
 mv "TASMAN" (67,902 DWT/Built 2000 in Germany - 5,936 TEU's) \$30 mill. to MSC  
 mv "SOFIA I" (63,059 DWT/Built 2010 in China - 5,100 TEU's) \$41 mill. including T/C  
 mv "CAPE MALE" (41,411 DWT/Built 2009 in China - 2,758 TEU's) Undisclosed price  
 mv "CAPE MOSS" (41,411 DWT/Built 2011 in China - 2,758 TEU's) Undisclosed price  
 mv "GABRIELA A" (38,121 DWT/Built 2005 in Germany - 2,702 TEU's) \$19.3 mill.  
 mv "CUL QINGDAO" (35,220 DWT/Built 2023 in China - 2,433 TEU's) \$40 mill.  
 mv "ATOUT" (23,978 DWT/Built 2010 in Germany - 1,702 TEU's) \$18 mill. to MSC  
 mv "BIG LILLY" (23,075 DWT/Built 1999 in Poland - 1,730 TEU's) \$6.5 mill. to MSC  
 mv "AS FENJA" (17,281 DWT/Built 2005 in Germany - 1,223 TEU's) \$8+ mill.  
 mv "CONSHIP MED" (13,872 DWT/Built 2004 in China - 1,118 TEU's) \$7 mill.  
 mv "CONSHIP LEO" (13,803 DWT/Built 2008 in China - 1,118 TEU's) \$10 mill.  
 mv "JSP BORA" (13,795 DWT/Built 2007 in China - 1,118 TEU's) Undisclosed price  
 mv "CONSHIP AIR" (13,715 DWT/Built 2006 in China - 1,118 TEU's) \$9 mill. incl T/C  
 mv "HENLENA SCHEPERS" (13,031 DWT/Built 2012 in China - 1,036 TEU's) Undisclosed price  
 mv "KATHERINA SCHEPERS" (13,031 DWT/Built 2012 in China - 1,036 TEU's) Undisclosed price  
 mv "KOTA TENAGA" (10,701 DWT/Built 2002 in Korea - 802 TEU's) \$4.1 mill.

Details given in good faith but without guarantee

Have a good week.





# COMPASS MARITIME WEEKLY REPORT

## MISCELLANEOUS VESSELS

### CONTAINERSHIPS SALES REPORTED THIS WEEK

Vessel Name	DWT	Year	Built	TEU	Engine	GEAR	Additional Info	Price (\$ Mill)	Buyer
TASMAN	67,902	2000	Kvaerner	5,936	Sulzer			\$30.0	Switzerland
SOPIA I	63,059	2010	Shanghai	5,100	Man B&W		Incl T/C until 5/2025 @ USD 26,850/Day	\$41.0	China
GABRIELA A	38,121	2005	Blohm	2,702	Man B&W			\$19.3	China
CUL QINGDAO	35,220	2023	Jiangsu	2,433	Man B&W			\$40.0	Greece
BIG LILLY	23,075	1999	Stocznia	1,730	Sulzer	3x40tc		\$6.5	Switzerland
AS FENJA	17,281	2005	Peene-Werft	1,223	Man B&W		SS/DD Due	\$8.5+	China
CONTSHIP MED	13,872	2004	Jinling	1,118	2004	2x45tc		\$7.0	Turkey
CONTSHIP LEO	13,803	2008	Taizhou	1,118	Man	2x45tc		\$10.0	USA
KOTA TENAGA	10,701	2002	Dae Sun	802	B&W	2x40tc		\$4.1	Undisclosed

### TWEENDECKERS/ MPC/ Ro-Ro/ MISCELLANEOUS VESSELS

Vessel Name	DWT	Year	Built	TEU	Engine	H/H	GEAR	Additional Info	Price (\$ Mill)	Buyer

## BUNKER PRICES

BUNKER PRICES (US\$/ton)	ROTTERDAM	FUJAIRAH	SINGAPORE
380CST	454.5	456.5	476.5
MGO	673.0	755.0	700.5
VLSFO	535.0	569.0	575.0

# COMPASS MARITIME WEEKLY REPORT

## CHARTERING MARKET SNAPSHOT

### TANKERS

#### BALTIC EXCHANGE TANKER FREIGHT INDICES

	CURRENT WEEK	LAST WEEK	LAST YEAR
<b>BDTI</b>	821	841	1473
<b>BCTI</b>	629	591	741

#### TANKER 12 MONTHS T/C RATES

	DWT	CURRENT WEEK	LAST WEEK
<b>VLCC</b>	300,000	37,000	42,500
<b>Suezmax</b>	150,000	30,000	31,500
<b>Aframax</b>	110,000	27,000	29,750
<b>LRI</b>	80,000	19,500	25,250
<b>MR</b>	47,000	19,500	22,750

### BULKERS

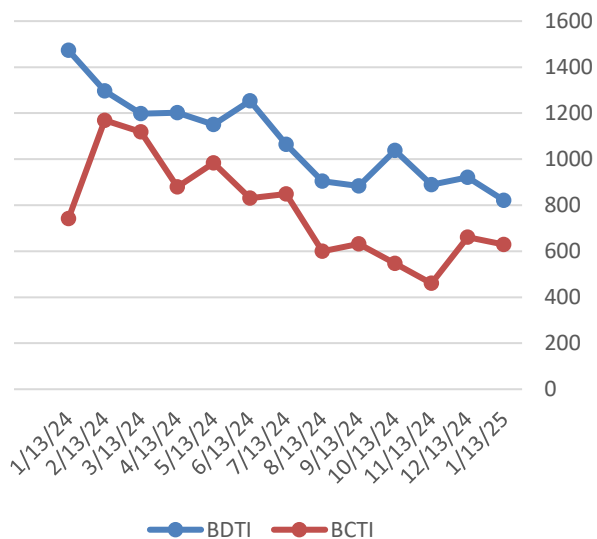
#### BALTIC EXCHANGE BULKER FREIGHT INDICES

	CURRENT WEEK	LAST WEEK	LAST YEAR
<b>BDI</b>	1048	1072	1460
<b>BCI</b>	1448	1375	2172
<b>BPI</b>	953	1040	1410
<b>BSI</b>	819	884	1088

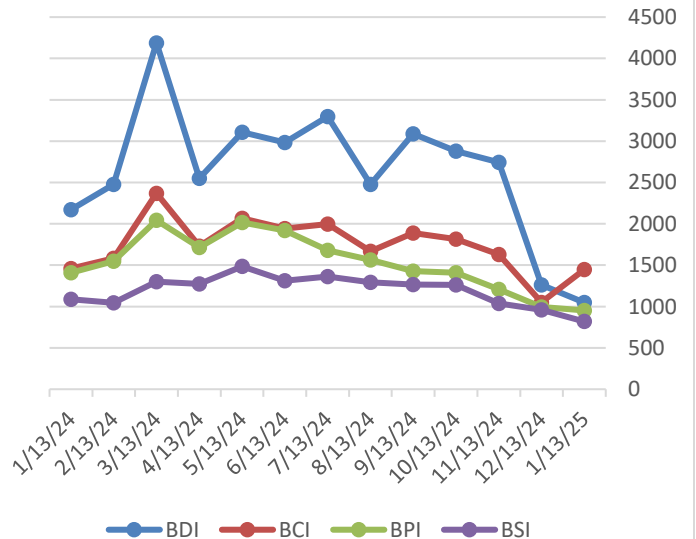
#### BULKER 12 MONTHS T/C RATES

	DWT	CURRENT WEEK	LAST WEEK
<b>CAPE</b>	180,000	17,750	17,115
<b>PANAMAX</b>	75,000	10,250	10,200
<b>SUPRAMAX</b>	52,000	11,000	12,000

Tanker Freight Indices



Bulker Freight Indices



# COMPASS MARITIME WEEKLY REPORT



## RECYCLING ACTIVITY REPORTED THIS WEEK

### INDIA

NAME	DWT	YEAR	LDT	ADDITIONAL INFORMATION	PRICE/ LDT (USD)
No Sales to Report					

### BANGLADESH

NAME	DWT	YEAR	LDT	ADDITIONAL INFORMATION	PRICE/LDT
MT BANGLAR JYOTI (CRUDE)	14,541	1987	3,740	'As Is' at Auction	Unknown
MT BANGLAR SHOURABH (CRUDE)	14,494	1987	3,787	'As Is' at Auction	Unknown
WEST OCEAN (GC)	4,152	1993	2,461		Unknown

### TURKEY

NAME	DWT	YEAR	LDT	ADDITIONAL INFORMATION	PRICE/ LDT
No Sales to Report					

### MISC.

NAME	DWT	YEAR	LDT	ADDITIONAL INFORMATION	PRICE/ LDT
No Sales to Report					

## RECYCLING STATISTICS

ASSET CLASS	THIS DATE 2025	THIS DATE 2024	2024 TOTAL	2023 TOTAL
ULCC/VLCC	0	0	3	2
SUEZMAX	0	0	2	1
AFRAMAX	0	0	6	2
PANAMAX TANKER	0	0	0	0
CAPE/COMBO (80K DWT +)	0	0	6	10
PANAMAX BULKER	0	0	18	3
POST PANAMAX BULKER	0	0	2	1

## BALTIC SHIP RECYCLING PRICES (US \$ / LDT)

LOCATION	TANKERS 30,000 LDT & above	TANKERS 15-30,000 LDT	TANKERS 7-15,000 LDT	BULK CARRIERS 20,000 LDT & above	BULK CARRIERS 9-20,000 LDT	BULK CARRIERS 5-9,000 LDT
BANGLADESH	477.75	481.92	487.50	468.67	476.75	478.67
INDIA	467.33	472.17	475.67	461.50	467.67	470.50
PAKISTAN	457.25	461.50	466.63	452.67	456.00	456.67

## UPCOMING BEACHING TIDES

LOCATION		
INDIA	Jan 11, 2025 – Jan 18, 2025	Jan 28, 2025 – Feb 4, 2025
BANGLADESH	Jan 15, 2025 – Jan 18, 2025	Jan 30, 2025 – Feb 2, 2025

# COMPASS MARITIME WEEKLY REPORT



## NEWBUILDINGS

### NEWBUILDING STATISTICS - TANKERS

ASSET CLASS	2025	2026	2027	TOTAL
VLCC (200k+ dwt)	5	24	41	70
SUEZMAX (125k-199k dwt)	30	38	34	102
AFRAMAX (85k-125k dwt)	63	70	70	203
PANAMAX (55k-85k dwt)	12	23	26	61
HANDY TANKER (10k-55k dwt)	220	238	164	622

### NEWBUILDING STATISTICS - BULKERS

ASSET CLASS	2025	2026	2027	TOTAL
CAPE SIZE (100k+ dwt)	38	47	32	117
PAN/KAM (70k-99k dwt)	139	163	106	408
SUPRAMAX (40k-69k dwt)	200	157	100	457
HANDYSIZE (10k – 39k dwt)	177	109	22	308

## Compass Maritime Services, LLC is Member of:

The Association of Ship Brokers & Agents (USA) Inc. (ASBA),



The Baltic Exchange



Panel Member of  
The Baltic Exchange Sale & Purchase Assessment (BSPA Index)  
The Baltic Ship Recycling Assessment (BSRA Index)

The information contained in this report has been obtained from various market sources. COMPASS MARITIME believes such information to be factual and reliable without making guarantees regarding its accuracy or completeness. COMPASS MARITIME will not be held responsible for any action or failure to take action upon reliance on information contained herein. This report, whether partially or in its entirety, cannot be reproduced by any means without the prior written authorization of COMPASS MARITIME. Compass Maritime adheres to all GDPR privacy requirements.

© 2000-2019 COMPASS MARITIME SERVICES, LLC All Rights Reserved